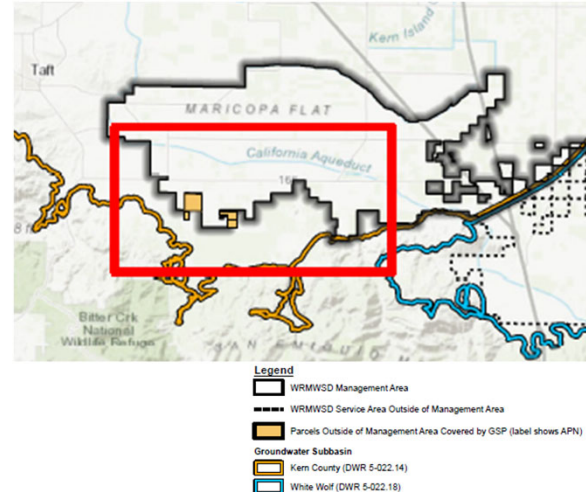


WRMWSD MA PLAN OVERVIEW

- Prepared by WRMWSD
- Covers “WRMWSD Management Area” and some White Lands
- Developed to meet SGMA regulatory requirements while reflecting local needs and preserving local control over water resources
- Process included active coordination and stakeholder engagement
- Overlap issues coordinated with AEWSD



1

BASIN AND LOCAL WATER BUDGETS HAVE BEEN COORDINATED AND WILL BE REFINED AFTER 2020

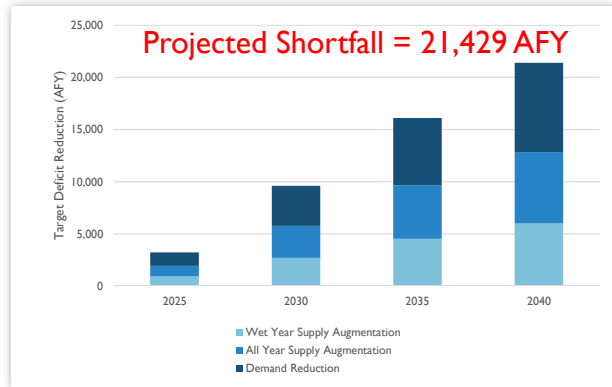
- Basin-wide Checkbook is a coordinated water budget approach for the entire Kern Subbasin that documents GSA-specific contributions to groundwater recharge
 - Total Supply: 187,737 AFY
 - Total Demand: 202,402 AFY
 - Balance/Deficit: -14,665 AFY
- WRMWSD used conservative (“worst case”) estimate of -21,429 AFY as basis for P/MAs and meeting MOs/MTs
- All water budgets have uncertainty and will be refined as part of GSP implementation



2

PROJECTS AND MANAGEMENT ACTIONS (P/MAS) DESIGNED TO ADDRESS PROJECTED DEFICIT

- P/MAs are designed to close water budget gap (-21,429 AFY based on 2030 climate change scenario)
 - Supply Augmentation
 - Demand Reduction
- Plan B: P/MAs will be accelerated if water level MTs are reached in 20% of Representative Monitoring Sites (RMS).
- Undesirable Result is defined as MTs are exceeded in 40% or more of the RMS.

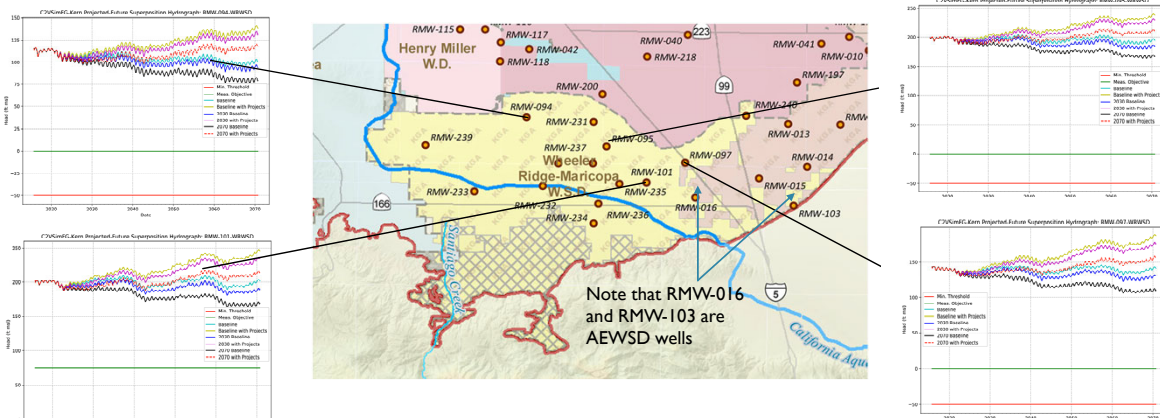


2040 "Glide Path" for P/MA Implementation



PROJECTED WATER LEVELS INDICATE NO SMC EXCEEDANCES

- Preliminary future model results including P/MAs suggest that Management Area will not have Undesirable Results at current monitoring well locations

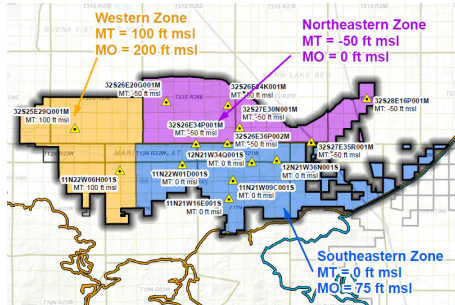


Source: TODD, email via KGA, 12/1/2019



SUSTAINABLE MANAGEMENT CRITERIA

- The MOs/MTs are defined to allow for a gradual balancing of the budget through supply augmentation and demand reduction
- All SMCs have been closely coordinated with Basin GSAs and stakeholders



Minimum Thresholds (MT) and Measurable Objectives (MO) for Chronic Lowering of Groundwater Levels



Sustainability Indicator	Site Type	Site Count	SMC Consideration
Chronic Lowering of Groundwater Levels	Well	14	Historical lows, recent 10-year groundwater level trends, temporal variability, and well construction
Reduction of Groundwater Storage	Well	14	Groundwater levels will be used as a proxy
Degraded Water Quality	Well	9	No unique MTs are set for this Sustainability Indicator
Land Subsidence	Stationary GPS	40	Max rate of subsidence observed from 1975-2019

5

WRMWSO CONDUCTED EXTENSIVE STAKEHOLDER OUTREACH

- Broad distribution of letters, surveys, email updates, and flyers
- Direct outreach to Landowners and Well owners
- Stakeholder Workshops
- Active coordination with KGA members and other Basin GSAs

Public Meeting Type	Number of Meetings
KGA GSA Board Meetings	29
KGA GSA SGMA Stakeholder Workshops, Meetings, and Open Houses	29
WRMWSO Board Meetings	67
WRMWSO Stakeholder Workshops	2
KGA Miscellaneous Meeting	69
Total Meetings to Date	196



6

WRMWSD RECEIVED MINIMAL COMMENTS DURING 90-DAY COMMENT PERIOD

Comments Received

1. Multiple Landowners on 27 November 2019
2. Chevron (email to WRMWSD on 19 November 2019)

* Comments received by KGA were reviewed for local applicability.

WRMWSD Response to Comments

- In-line Comment Log in MA Plan
- Detailed comments response in Appendix
- Limited in-line changes to MA Plan; record included in Appendix

Additional Revisions:

- Added additional discussion of water budget methodologies, including Checkbook, and incorporated the updated model results.

