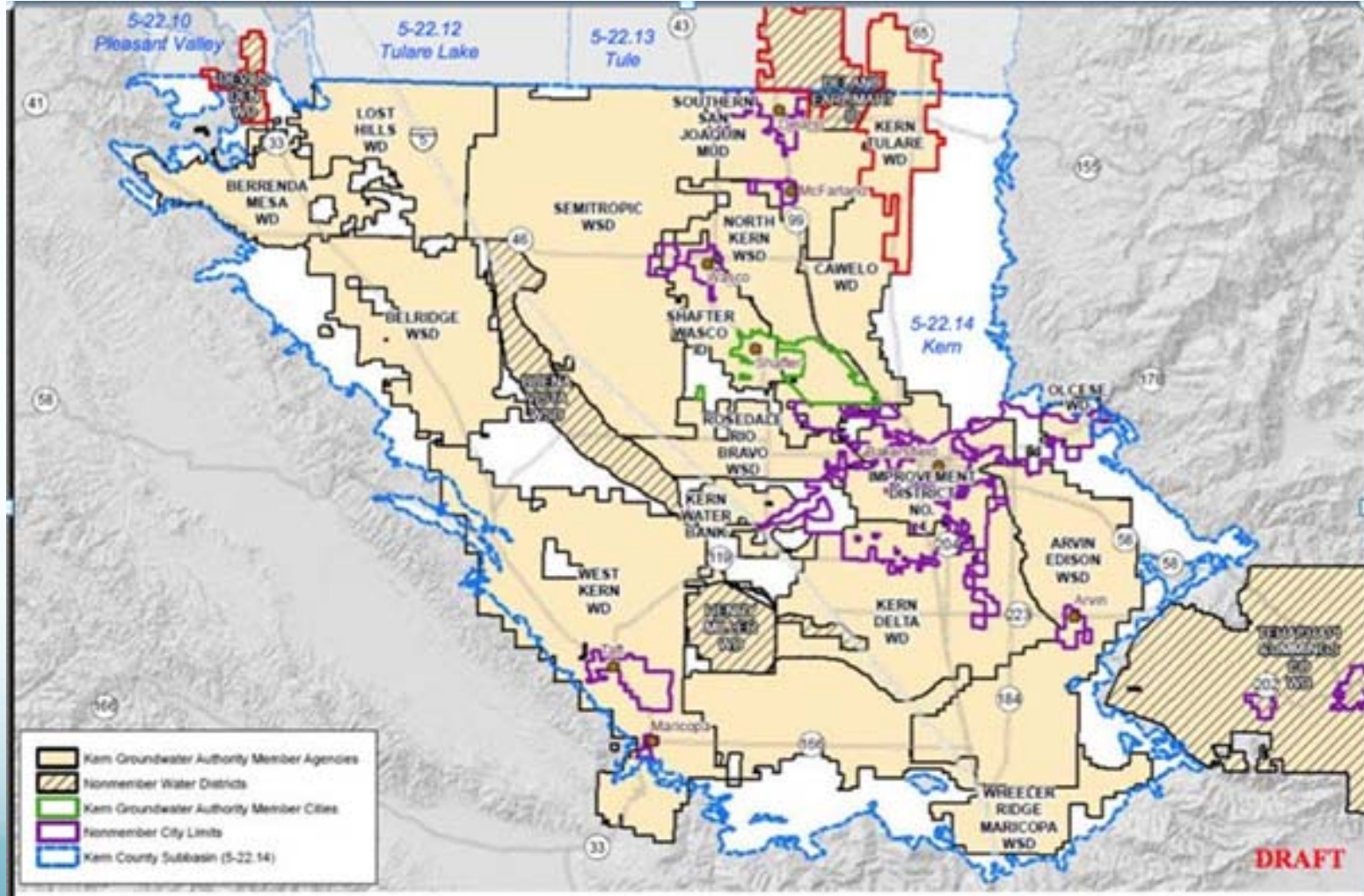


# The Sustainable Groundwater Management Act in Kern Subbasin



Map Image by GEI Consultants Inc.

# Workshop Outline

- I. Initial Kern SGMA Background
- II. Proposed SGMA Approach
- III. SGMA Overview and Requirements
- IV. Group Discussion

# Kern SGMA Background

- Largest Subbasin in California
- Overlapping interests and jurisdictions
- Diverse array of groundwater pumpers/ beneficial users
  - Water Districts / Agencies
  - CSDs / PUDs / RCDs
  - Private Water Companies
  - DACs
  - Environmental Interests
    - Multiple beneficial uses of groundwater
    - Diverse opinions about groundwater impacts

# SGMA Background

***Comprehensive statewide legislation that creates a framework for sustainable groundwater management***

- Became law on January 1, 2015
- All medium and high priority basins managed sustainably by 2040 or 2042 depending on overdraft status
- Emphasis on local control with State oversight
- Requires Groundwater Sustainability Agencies (GSA)
- Requires Groundwater Sustainability Plans (GSP)

# SGMA Background

## *How does SGMA define sustainability?*

Sustainability: Manage groundwater to prevent undesirable results (significant and unreasonable):

- Chronic lowering of groundwater levels
- Reduction of groundwater storage
- Seawater intrusion
- Degraded water quality
- Land subsidence
- Depletions of interconnected surface waters

# SGMA Background

## *Key Definitions (to be discussed later)*

- “Any local agency or combination of local agencies overlying a groundwater basin may decide to become a groundwater sustainability agency for that basin.” (Water Code § 10721)
- “Local agency” means a local public agency that has water supply, water management, or land use responsibilities within a groundwater basin.” (Water Code § 10721)

# CCP SGMA Background

- **Local Assistance Program – GSA Formation**
  - 16 Basins / Subbasins
    - San Diego County to Shasta County
    - Central Valley, Coastal, Eastern Sierra, Bay Area
- **Statewide Outreach Program**
  - DWR Initial SGMA Public Listening Sessions
  - DWR Basin Boundary Regulation Public Outreach
  - DWR Groundwater Sustainability Plan Public Outreach
  - DWR SGMA Tribal Program
  - State Board Fee Assessment and State Intervention Public Outreach
  - DWR Best Management Practices Public Outreach



# Kern SGMA Process – Proposed Stakeholder Assessment Process

## ***The Center for Collaborative Policy will:***

- Conduct a comprehensive stakeholder assessment
- Coordinate and facilitate public workshops about critical issues that must be addressed in SGMA implementation
- Coordinate and facilitate meetings of GSA eligible agencies and other interested parties
- Conduct meetings with individual GSA eligible agencies and others (as needed)



# Proposed SGMA Approach and Tasks

## Project Schedule

PROPOSED PROJECT SCHEDULE																					
Task	Sept		Oct				Nov					Dec					Jan				
	4	5	1	2	3	4	1	2	3	4	5	1	2	3	4	5	1	2	3	4	5
<b>Task 1 - Background Preparation</b>	[Task duration: Sept 4 - Sept 5]																				
<b>Task 2 - Conduct Stakeholder Assessment</b>	[Task duration: Sept 5 - Nov 2]																				
Start up Meeting	[Activity: Sept 5]																				
Prepare Stakeholder Assessment Materials	[Activity: Sept 5 - Sept 6]																				
Conduct Stakeholder Assessment Interviews	[Activity: Sept 6 - Sept 7]																				
Prepare Workshop Design Report	[Activity: Oct 2]																				
<b>Task 3 - Design and Conduct Public Workshops</b>	[Task duration: Oct 2 - Dec 4]																				
Attend Scoping Meeting	[Activity: Oct 2]																				
Conduct Public Workshops (includes initial outreach)	[Activity: Oct 4, Oct 5, Nov 3, Nov 4, Dec 2, Dec 3]																				
Attend Authority Meetings (assumes 4th week of each month)	[Activity: Nov 4, Nov 11, Dec 9, Dec 16, Jan 13]																				
<b>Task 4 - Prepare Report on Key Basin Issues and Next Step Recommendations</b>	[Task duration: Nov 11 - Jan 4]																				
Conduct Planning Meetings	[Activity: Nov 11 - Nov 12]																				
Prepare Issues Memorandum	[Activity: Dec 16 - Dec 17]																				
Prepare Recommendations Report	[Activity: Jan 13]																				
<b>Task 5 - Project Management</b>	[Task duration: Sept 4 - Jan 4]																				

# SGMA Background – GSA Formation

## **GSA Formation Process and Deadlines**

*Effective January 1<sup>st</sup>, 2016, eligible agencies must...*

- Submit GSA formation notice within 30 days of decision (e.g. resolution or legal agreement)
- Include map and accompanying narrative indicating:
  1. Local agency service area boundaries
  2. Boundaries the local agency intends to manage
  3. Any other agencies managing or proposing to manage groundwater in the basin

# SGMA Background – GSA Formation

## **GSA Formation Process and Deadlines**

*Effective January 1<sup>st</sup>, 2016, eligible agencies must...*

- Submit a copy of the resolution or legal agreement forming the local agency
- A copy of any new bylaws, ordinances or new authorities developed by the local agencies
- A list of interested parties and explanation of how their interests will be considered
- New steps reflect passage of SB13

# SGMA Background

## *DWR and State Water Board Roles*

- DWR:
  - Develop Basin Boundary and GSP regulations
  - Review GSPs, decide on adequacy, implementation
- State Water Board:
  - Implement State intervention
  - Reporting
  - Assess fees
  - Designate Probationary Basins
  - Develop Interim Plans, implement those Plans

# SGMA Background

*State Water Board Intervention* – In all triggering events, intervention is the result of failure by locals to create a GSA(s) and/or adopt and implement a GSP.

- Data
  - Same data needed by a GSA, but now managed by State
  - Higher frequency (monthly minimum reporting)
- Fees
  - Fees associated with reporting
  - Board recovers cost for all intervention-related activities (monitoring plans, well construction, facilitation, technical studies, models)
- Interim plans
  - Pumping restrictions are most straight-forward
  - State developed physical solutions are unlikely

# SGMA Background – Governance

## ***Groundwater Sustainability Agencies (GSAs)***

- “Any local agency or combination of local agencies overlying a groundwater basin may decide to become a groundwater sustainability agency for that basin.” (Water Code § 10721)
- “Local agency” means a local public agency that has water supply, water management, or land use responsibilities within a groundwater basin. (Water Code § 10721)
  - e.g. - counties, cities, water agencies, irrigation districts, drainage districts, PUDs, CSDs. or similar

# SGMA Background – Governance

## *Groundwater Sustainability Agencies (GSAs)*

- One or more GSAs must be formed per basin / subbasin
- A GSA may be formed by a single eligible agency, or by legal agreement between two or more eligible agencies.
- Two or more GSAs must prepare a Coordination Agreement (a legal agreement) between them. (Water Code § 10721, 10727)(b)(3), etc.)
- County represents / manages all groundwater conditions outside another managed area (Water Code § 10724)



# SGMA Background – Governance

## *Groundwater Sustainability Agencies (GSAs)*

- All GSAs must eventually have a defined governance approach (*as per GSP regs*)
  - Documentation of the organization and management structure of the Agency. The documentation shall identify persons with management authority for implementation of the Plan. (Article 5, § 354.6 (b))
  - The legal authority of the Agency with specific reference to citations setting forth the duties, powers, and responsibilities of the Agency, including information demonstrating that the Agency has the necessary legal authority to implement the Plan. (Article 5, § 354.6 (d))

# SGMA Background – Governance

## **GSA Powers and Authorities** (Water Code § 10725)

*A GSA must prepare a GSP. At their discretion, GSAs may...*

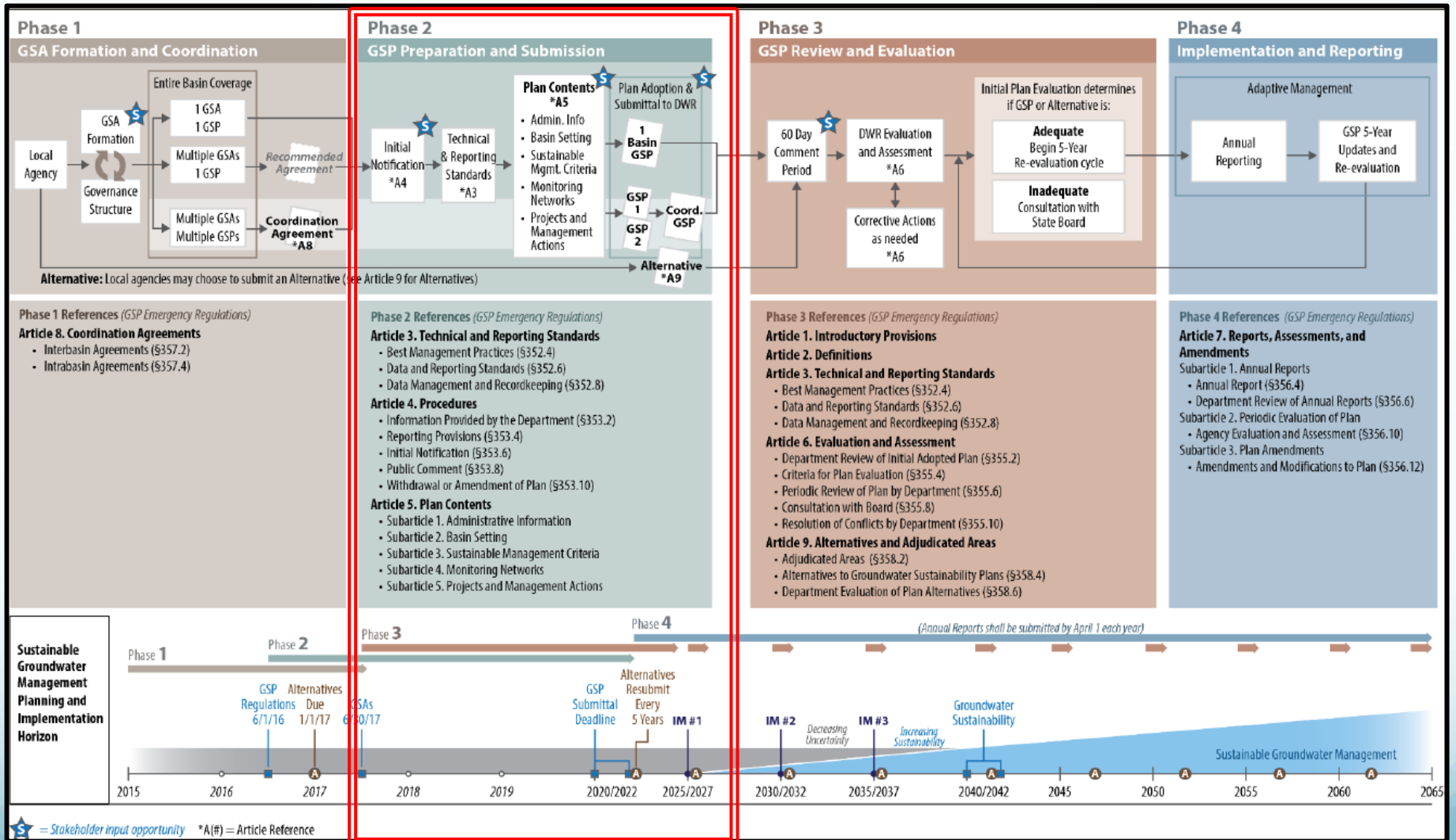
- Adopt rules, regulations and ordinances
- Conduct groundwater studies / investigations
- Register and monitor wells
- Require reports of groundwater extraction
- Implement capital projects to meet goals
- Assess fees to cover management costs

# SGMA Background – Governance

## GSA Roles and Responsibilities

*Interested parties must be included in SGMA planning:*

- All Groundwater Users
- Holders of Overlying Rights (agriculture and domestic)
- Municipal Well Operators and Public Water Systems
- Tribes
- County
- Planning Departments / Land Use
- Local Landowners
- Disadvantaged Communities
- Business
- Federal Government
- Environmental Uses
- Surface Water Users (*if connection between surface and ground water*)



# Thank You

For more information, please contact:

**Stephanie Lucero**  
**Senior Mediator**  
**Center for Collaborative Policy**  
**[slucero@ccp.csus.edu](mailto:slucero@ccp.csus.edu)**  
**916-445-2079**

Or

**Dave Ceppos**  
**Associate Director**  
**Center for Collaborative Policy**  
**[dceppos@ccp.csus.edu](mailto:dceppos@ccp.csus.edu)**  
**916-445-2079**

# Questions / Discussion